

Sample Revenue Cycle Management Reports



Park Medical Billing Inc.

106 Grand AV, #210
Englewood, NJ 07631
Tel: 1-201-585-7306
Fax: 1-888-609-2481

Email: info@ParkMedicalBilling.com
www.ParkMedicalBilling.com



As part of our medical billing services, we offer a multitude of fully customized, easy to read online reports for your practice. These reports offer a clear analysis of revenue cycle management, provider performance, Insurance reimbursements, and more, using interactive charting.

Our real time online reports are specifically designed to give enhanced visibility of your operations at the click of a button. These

reports are user friendly and grant instant access to data so that you can immediately track performance and make qualified decisions.

You can analyze payments by carrier, provider, location, procedure, diagnosis, timeframe, etc. There are currently many different reports to choose from, as well as customizable reports that replace the static reports generated by typical billing software.

These **online reports** offer analysis of three major components of the practice:

- **Overall Practice Revenue Management**
- **Provider Performance**
- **Denial Management**
- **Procedure and Diagnosis Code Analysis**

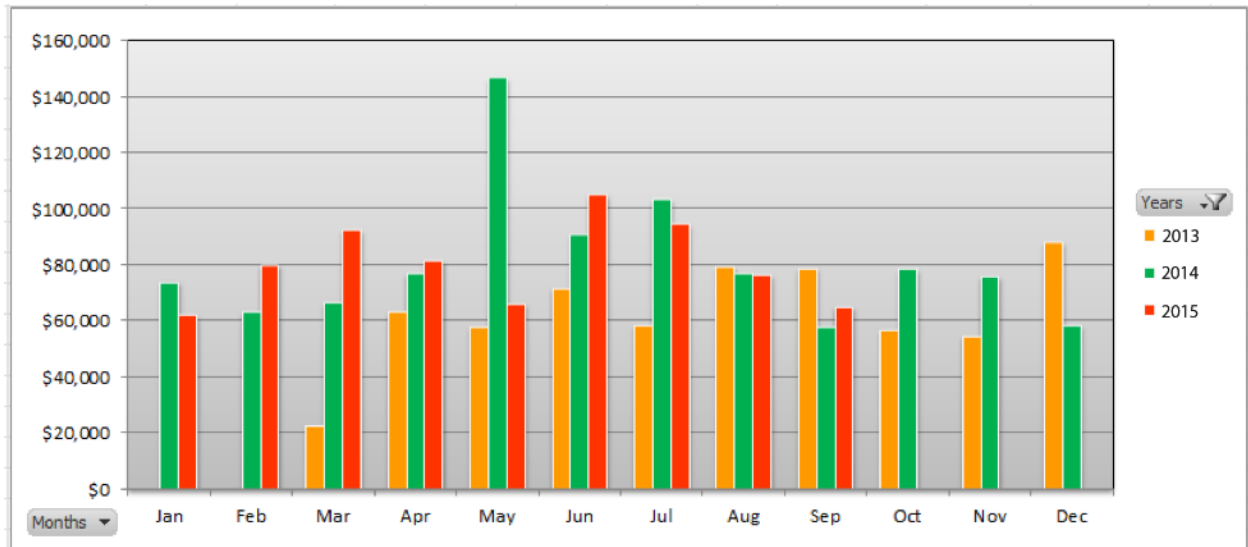
Key points are presented in the text boxes to provide additional highlights for each individual report. Unlike most computer system generated reports, our easy to read format allows for a quick interpretation of pertinent data.

We are a team of business minded, forward thinking, efficient and analytical people, which are the best qualities for in a Revenue Cycle Management company. We have all the capabilities that can improve and accelerate your revenue cycle process, so that you can achieve higher productivity, faster payments, decreased costs, and improved patient service.

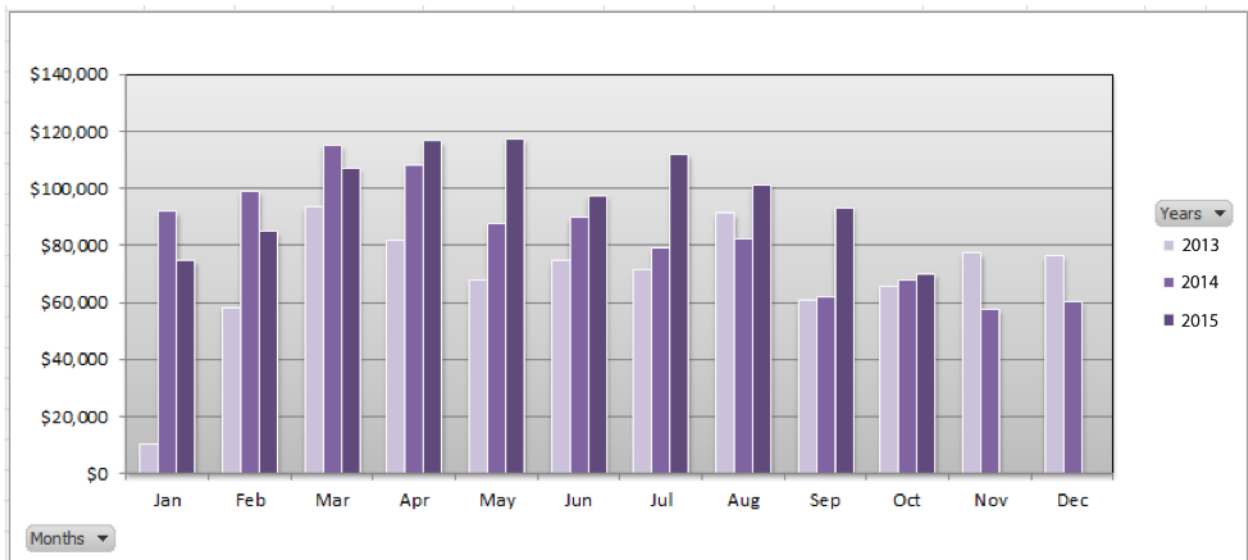
Practice Management Summary Reports

These reports show the trends of key information in your practice over last few years on collected revenue, billed amount, patient visit, and new patients. This allows you to view by months and years for comparison analysis of your practice.

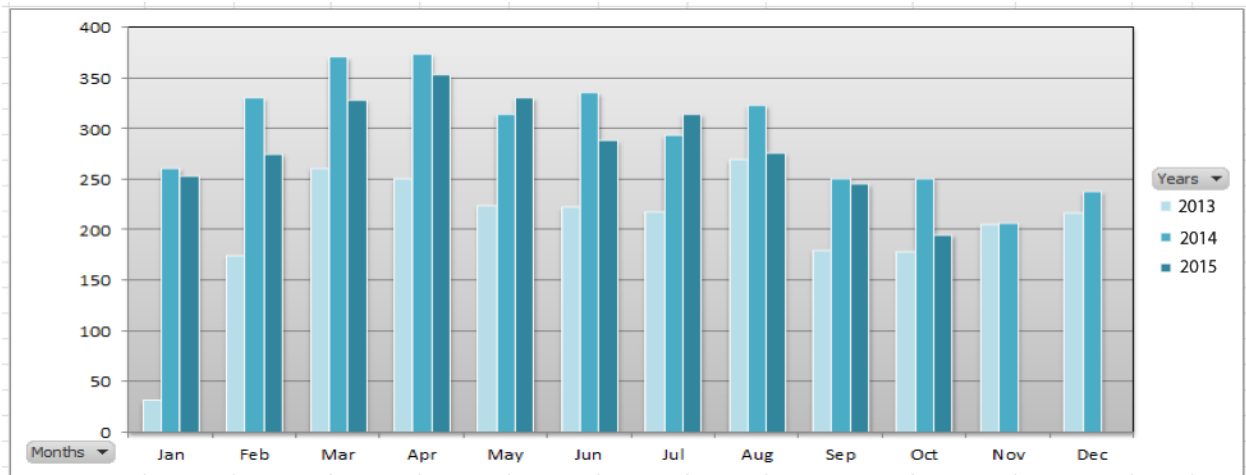
1. Monthly Revenue by Year



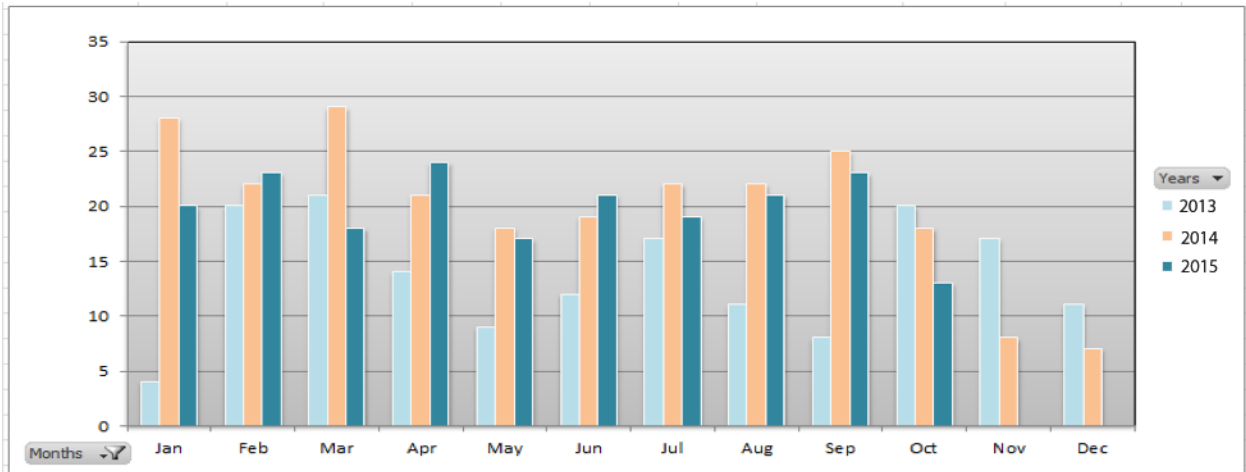
2. Monthly Billed Amount by Year



3. Monthly Patient Visits by Year



4. Monthly New Patients By Year



5. Monthly Aging Report

